

Schedule of Joinery

NO.	WIDTH	HEIGHT	DESCRIPTION
D	3'-3"	12'-0"	12/93/29/534/B/13/93
D1	3'-3"	12'-0"	Planning Form No. 1000-1000
D2	3'-3"	12'-0"	APPROVED
W1	5'-0"	4'-0"	Support to the conditions in
W2	5'-0"	4'-0"	the office plan. T.W. FRENCH
W3	3'-0"	4'-0"	FOR MEMBER SECRETARY
W4	3'-0"	4'-0"	MADRAS METROPOLITAN
W5	3'-0"	4'-0"	DEVELOPMENT AUTHORITY
W6	3'-0"	4'-0"	
W7	3'-0"	4'-0"	
W8	3'-0"	4'-0"	
W9	3'-0"	4'-0"	
W10	3'-0"	4'-0"	

Specification

1. ALL 0-23 TK BRICK WALLS ARE IN CM 1:5
2. ALL 0-12 TK BRICK WALLS ARE MINIM. WITH 58 RODS AT EVERY THIRD COURSE.
3. ALL RCC ITEMS ARE IN MIX 1:2:4
4. P.C.C. FOR FOUNDATION IN MIX 1:3:6
5. P.C.C. FOR FLOORING IN MIX 1:3:6
6. PLASTERING TO CEILING IN CM 1:3
7. PLASTERING TO WALLS IN CM 1:4

Legend

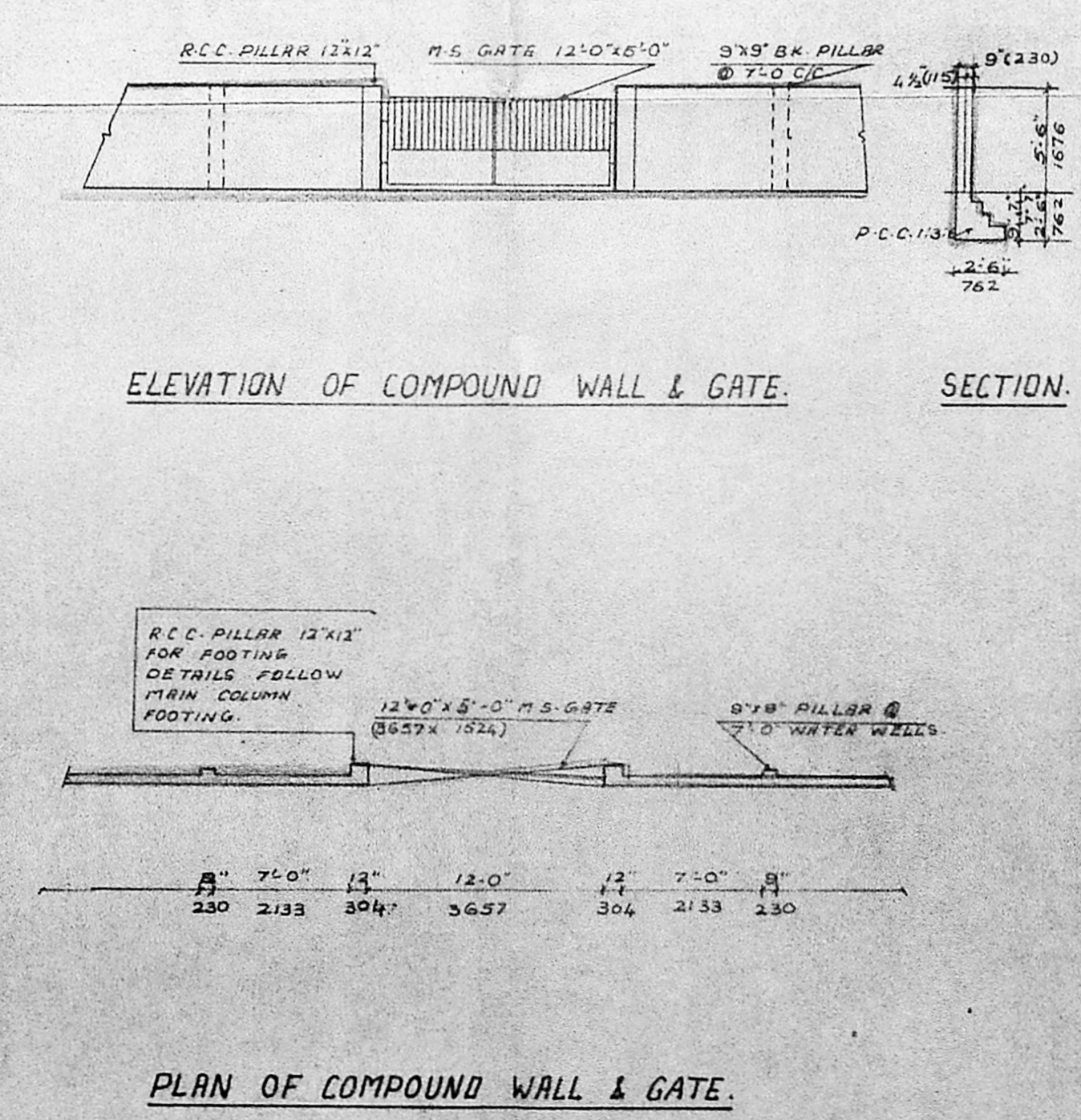
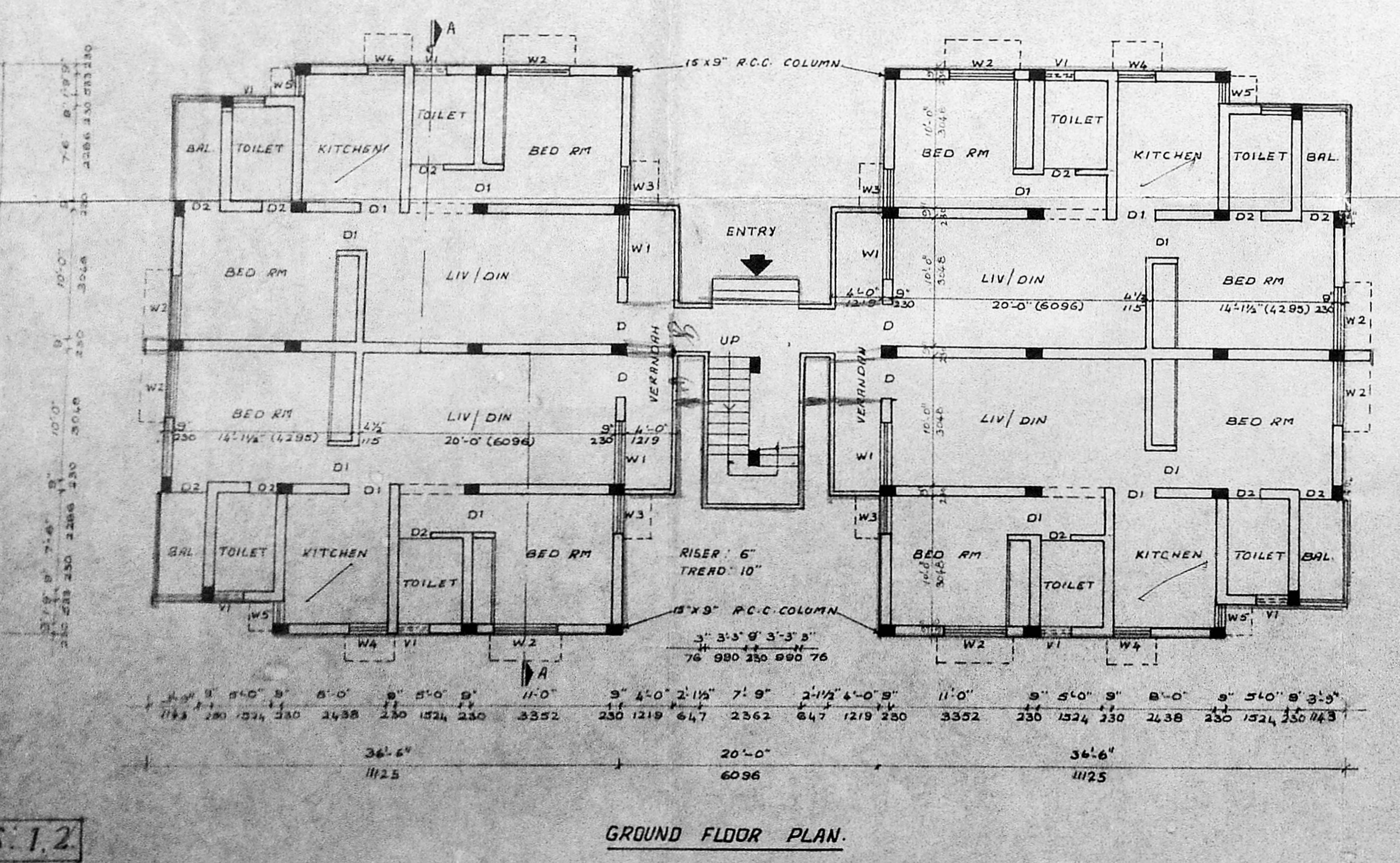
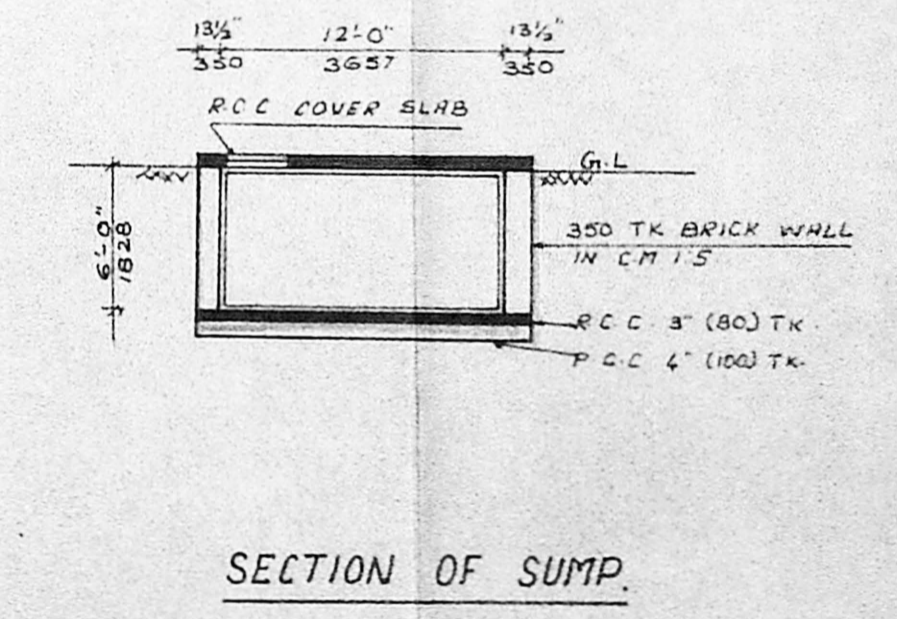
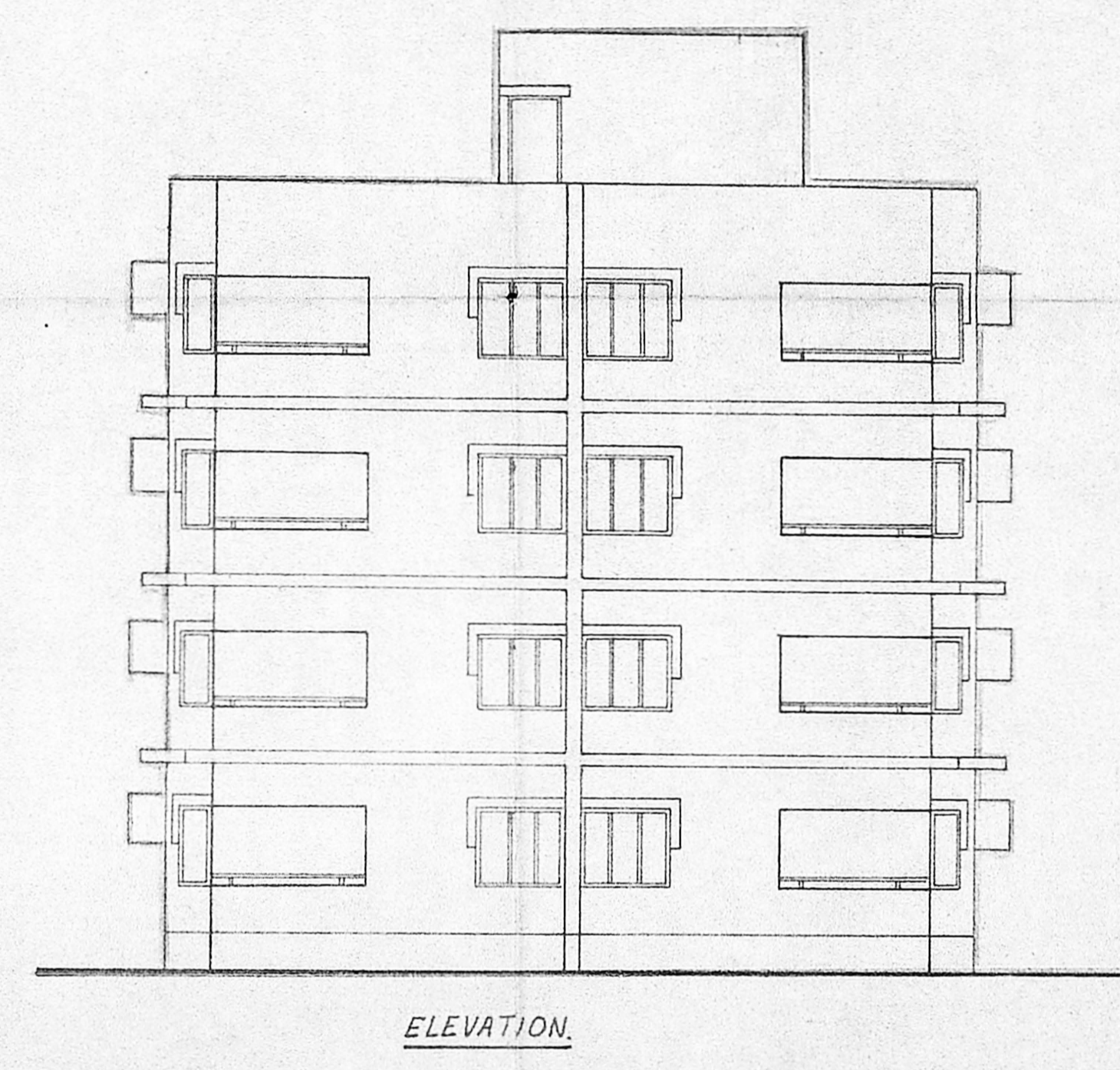
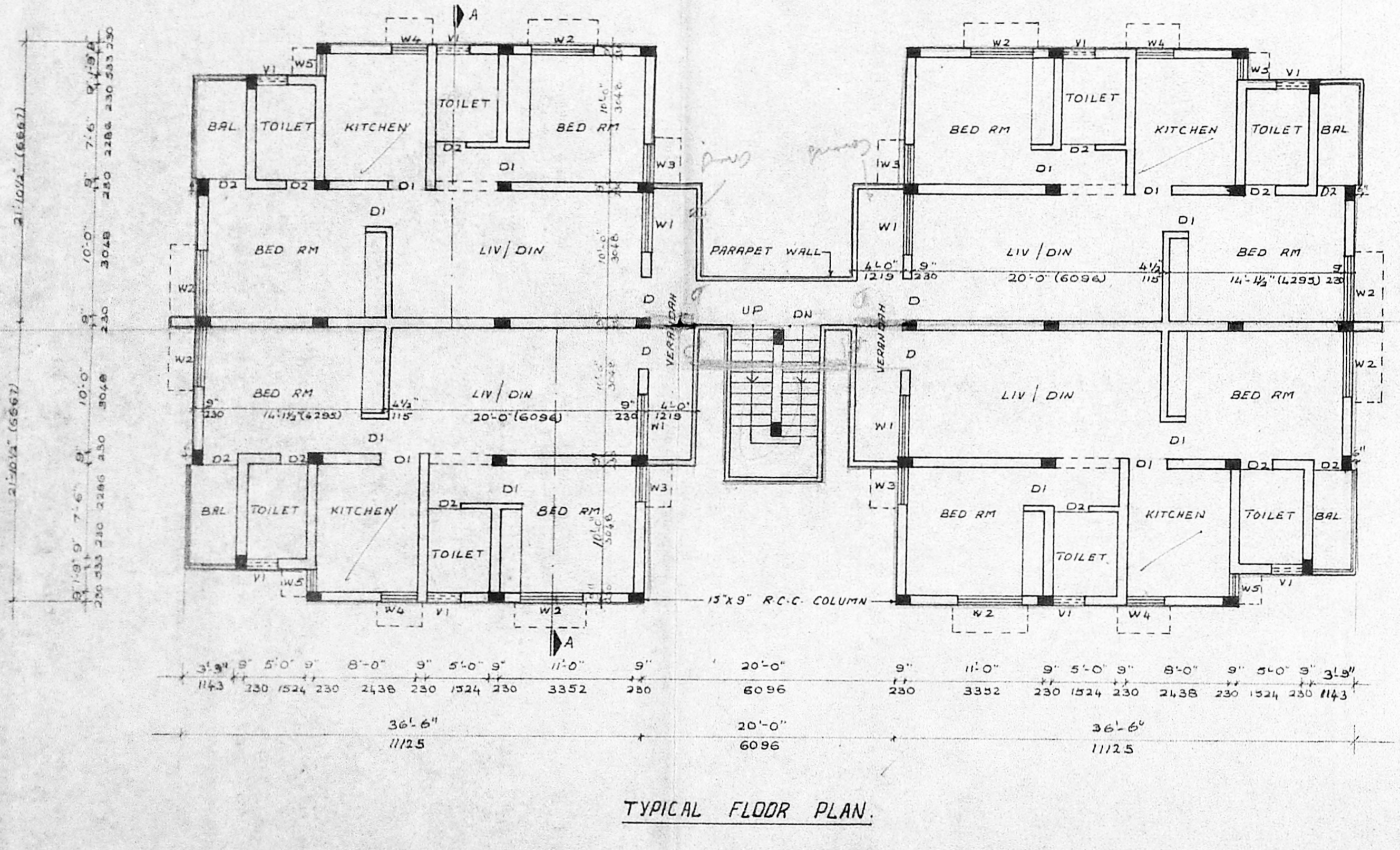
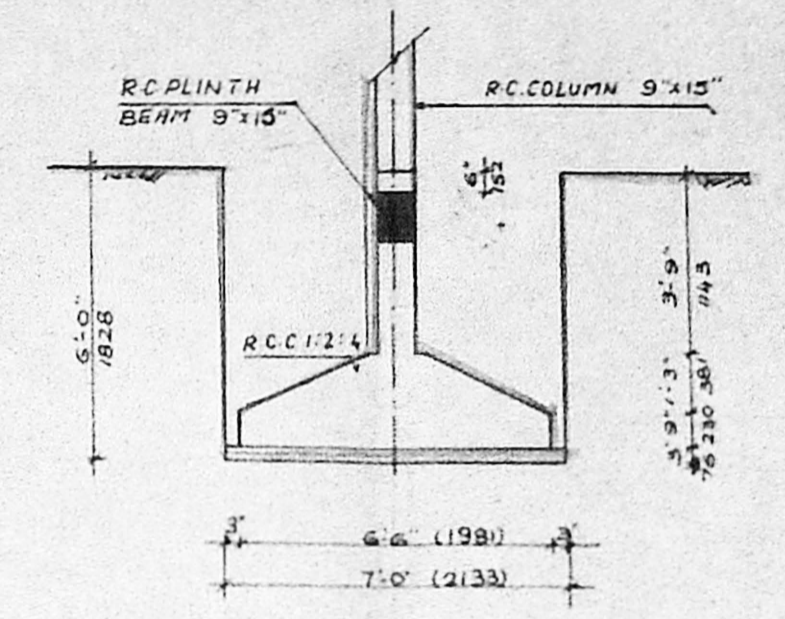
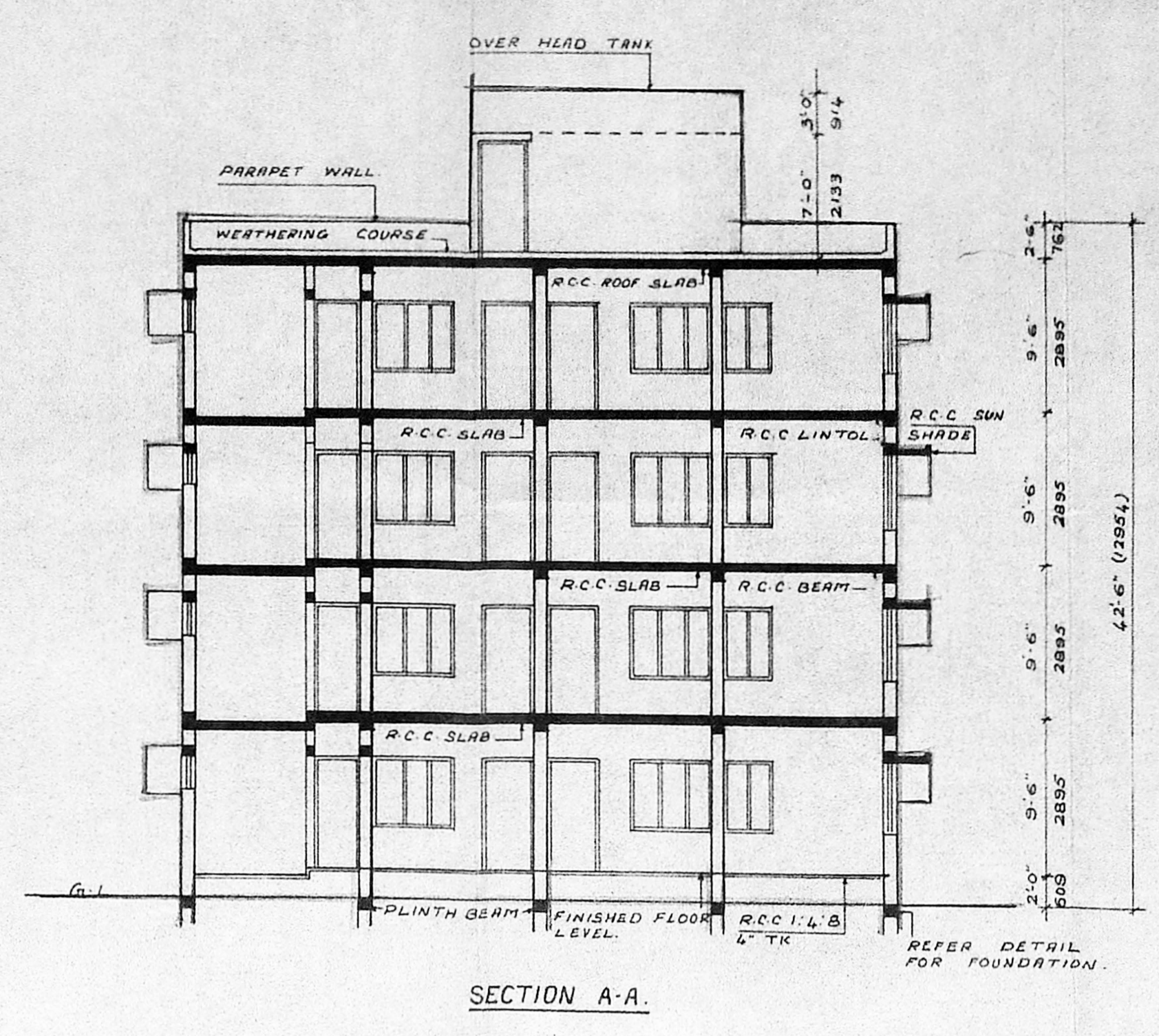
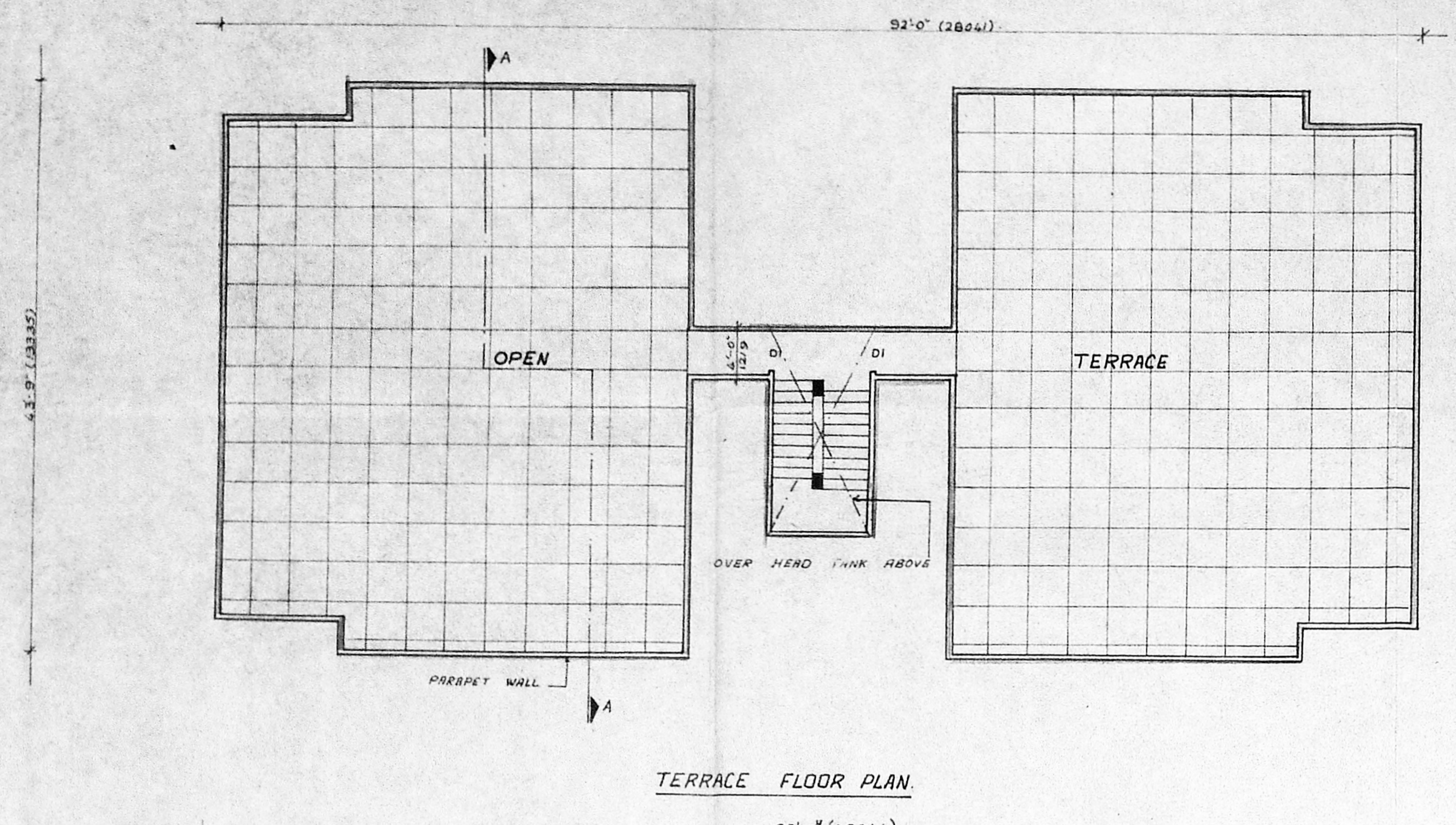
1. PROPOSED WORK SHOWN THUS
2. SITE BOUNDARY
3. ROAD
4. WATER LINE
5. DRAINAGE

Scale 1"=8ft Date 22-01-1988

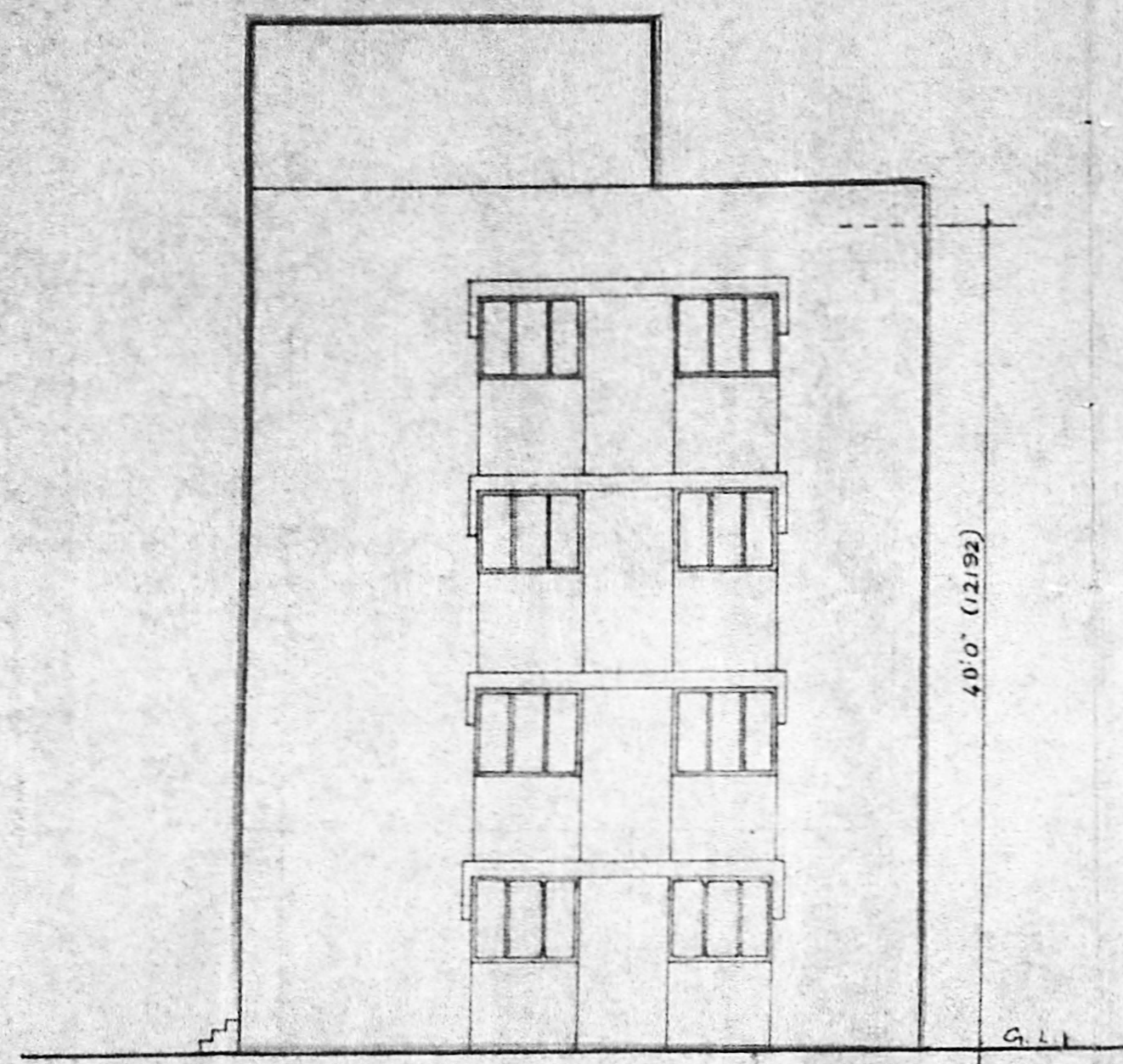
Owner: MMDA/BI/PP No. 1
 C.No. 3/822/89
 Assn. L.P. 10/10/89
 Scrutiny: 9/20/89
 PART I
 PART II

Job Title: Revised Plans (as at site) For Ms. Rajani Builders at 88/1 Coast Road Thiruvanniyur Bearing S No.201/1, Division No:150 Village No:140.

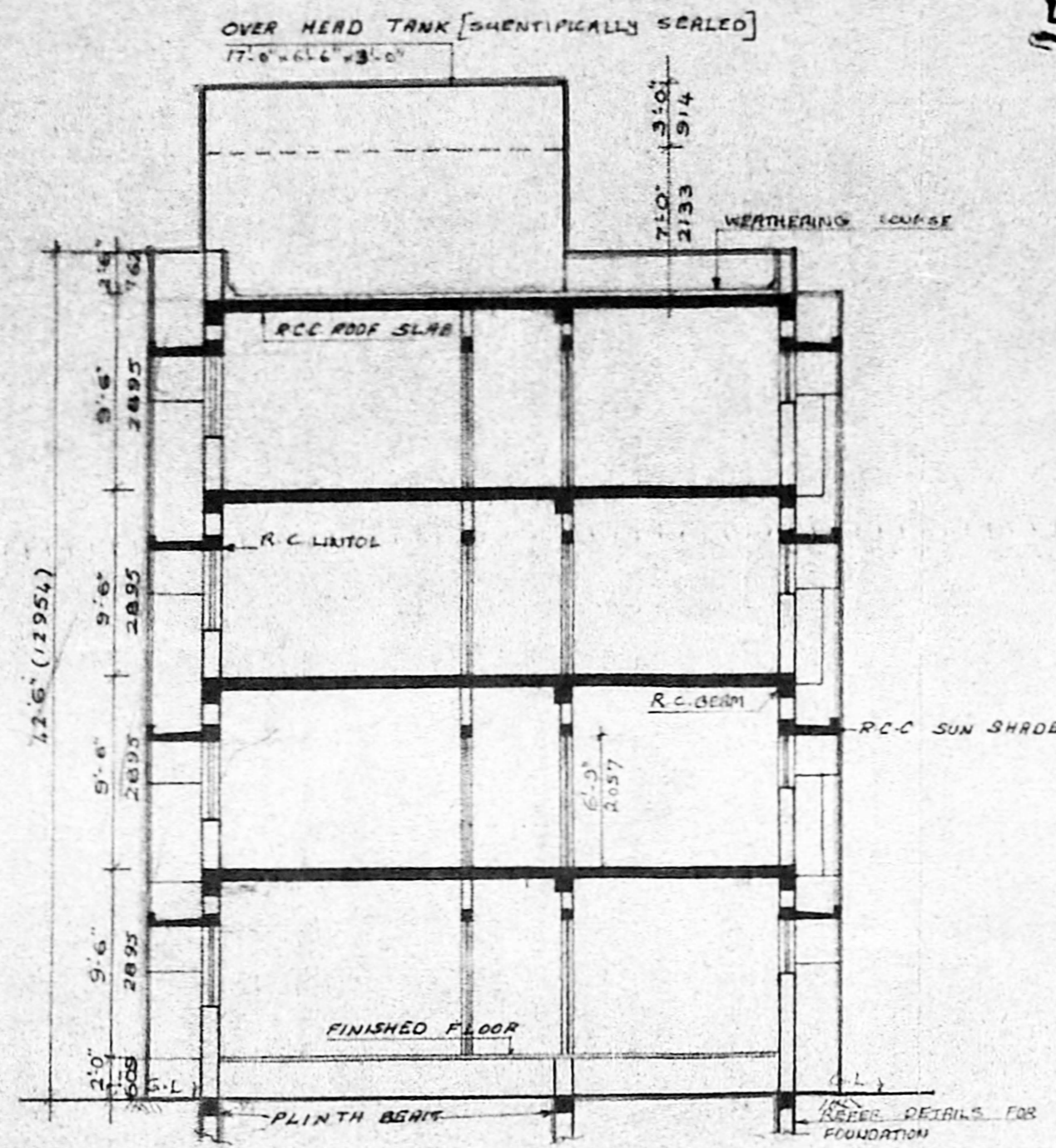
ARCHITECT: S. Subramaniam, M. ARCH, A.I.A., ARCHITECT & INTERIOR DESIGNER, LICENSED CLASS I SURVEYOR NO.90, 81, KAMARAJ AVENUE, ADYAR, MADRAS 600070. (PH: 610774, 618101)



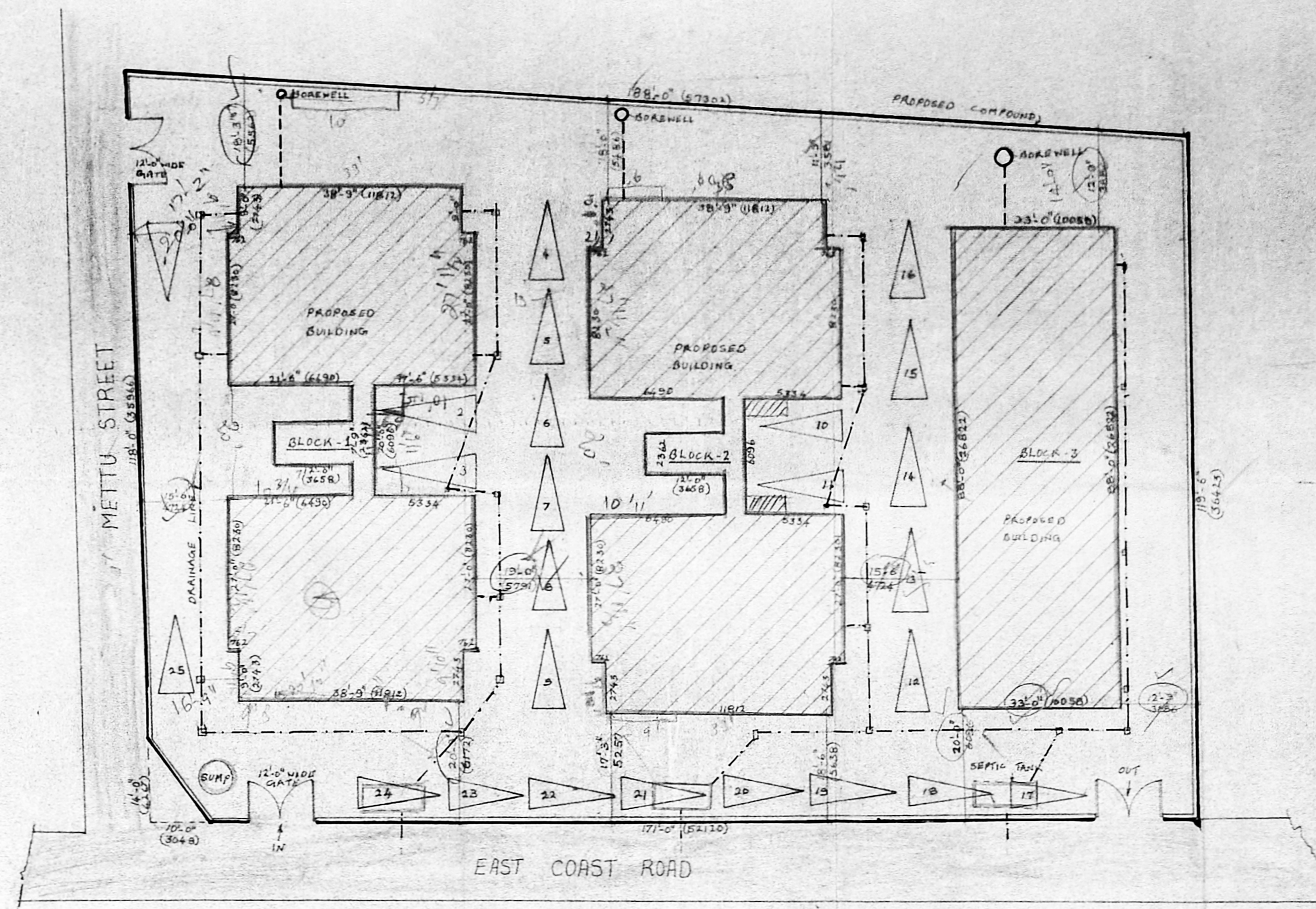
BLOCKS: 1, 2



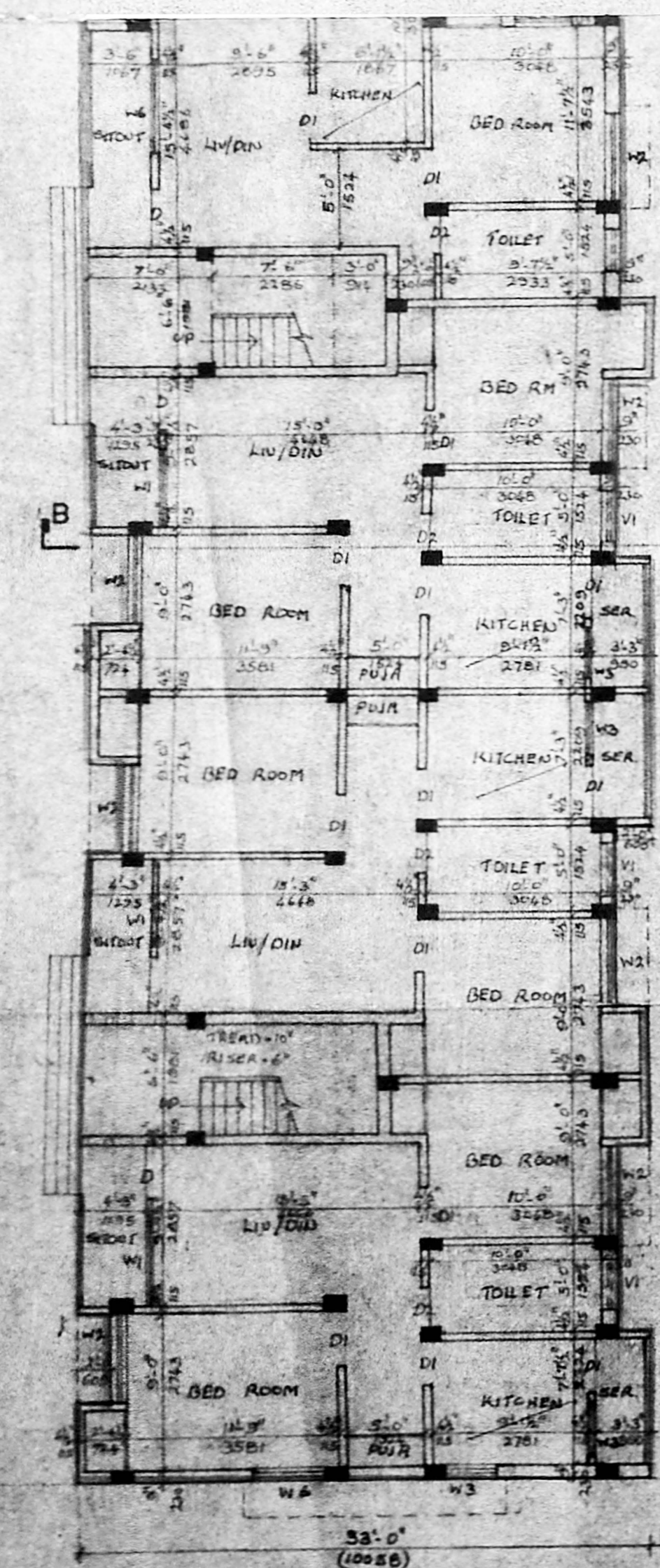
ELEVATION



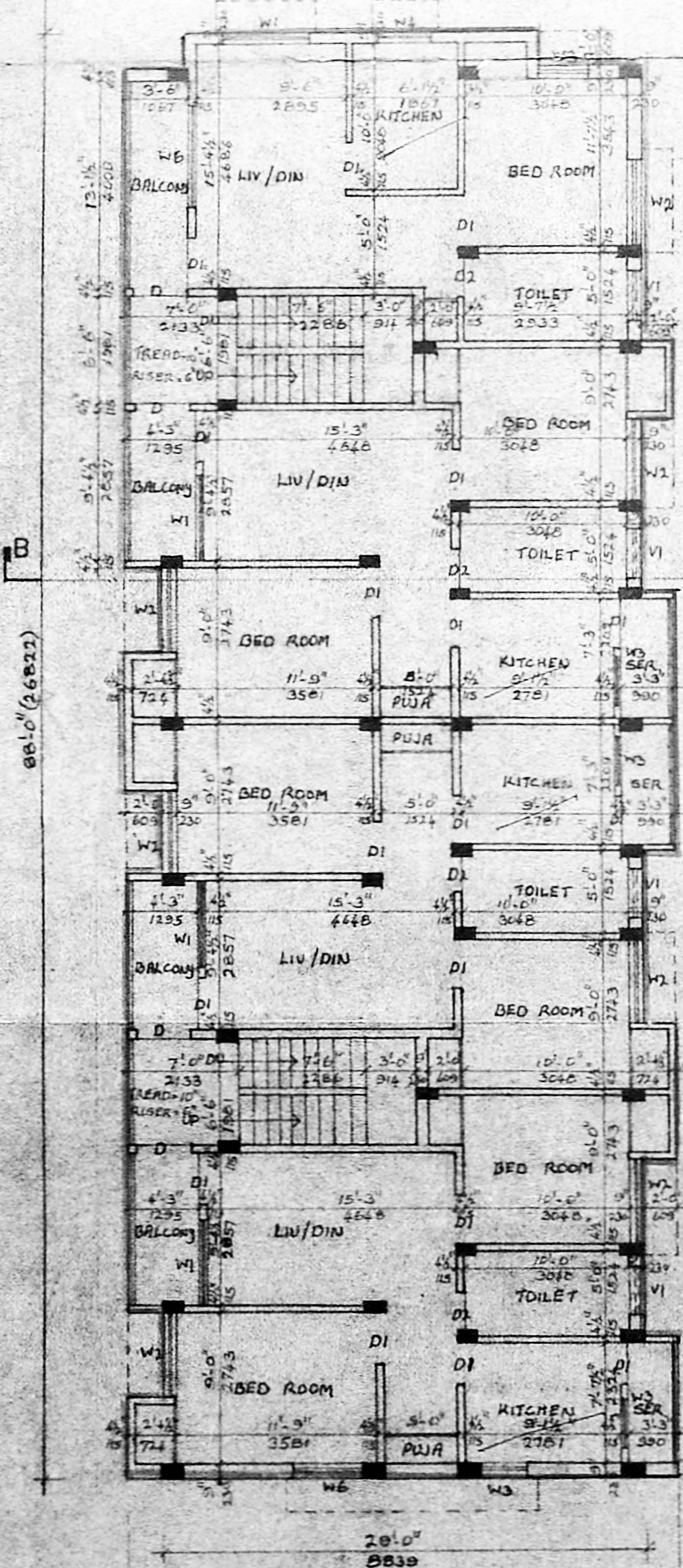
SECTION - B - B



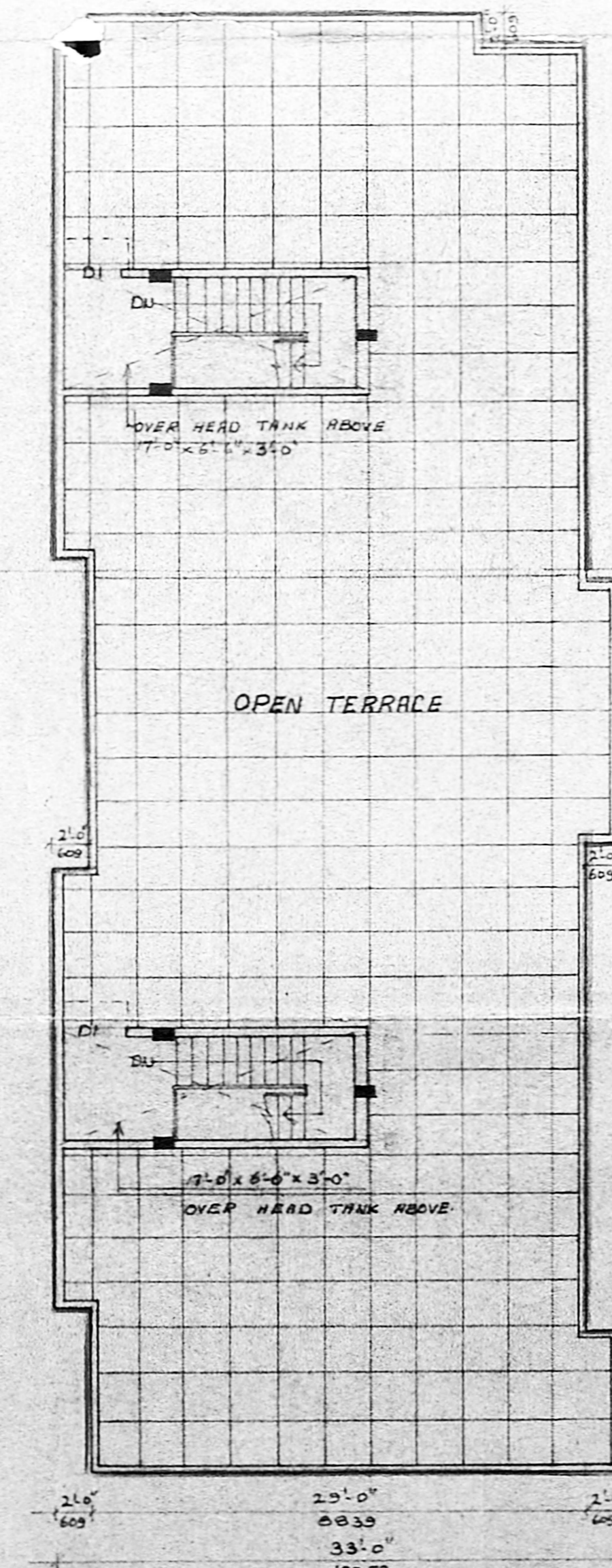
SITE PLAN



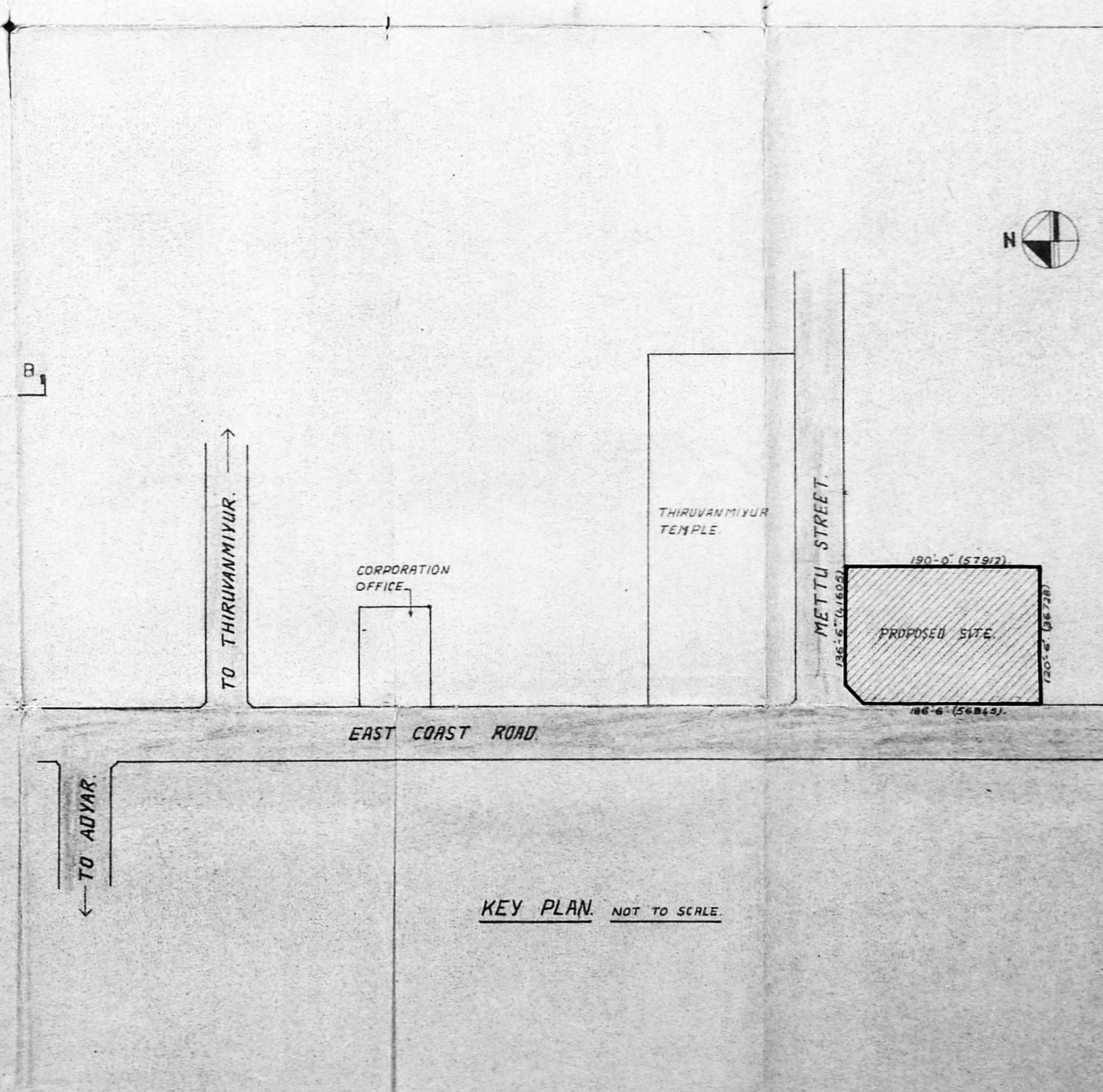
GROUND FLOOR PLAN



TYPICAL FLOOR PLAN



TERRACE FLOOR PLAN



KEY PLAN NOT TO SCALE

Schedule of joinery

NO	WIDTH	HEIGHT	DESCRIPTION
D	3'-3"	6'-8"	T.W. SLUSH DOOR
O1	3'-0"	6'-8"	
O2	2'-6"	6'-8"	
W1	3'-0"	6'-8"	T.W. IRONEN WINDOW
W2	3'-0"	6'-8"	
W3	3'-0"	6'-8"	
W4	3'-0"	6'-8"	
W5	3'-0"	6'-8"	
W6	3'-0"	6'-8"	
W7	3'-0"	6'-8"	
W8	3'-0"	6'-8"	
W9	3'-0"	6'-8"	
W10	3'-0"	6'-8"	
W11	3'-0"	6'-8"	
W12	3'-0"	6'-8"	
W13	3'-0"	6'-8"	
W14	3'-0"	6'-8"	
W15	3'-0"	6'-8"	
W16	3'-0"	6'-8"	
W17	3'-0"	6'-8"	
W18	3'-0"	6'-8"	
W19	3'-0"	6'-8"	
W20	3'-0"	6'-8"	
W21	3'-0"	6'-8"	
W22	3'-0"	6'-8"	
W23	3'-0"	6'-8"	
W24	3'-0"	6'-8"	
W25	3'-0"	6'-8"	
W26	3'-0"	6'-8"	
W27	3'-0"	6'-8"	
W28	3'-0"	6'-8"	
W29	3'-0"	6'-8"	
W30	3'-0"	6'-8"	
W31	3'-0"	6'-8"	
W32	3'-0"	6'-8"	
W33	3'-0"	6'-8"	
W34	3'-0"	6'-8"	
W35	3'-0"	6'-8"	
W36	3'-0"	6'-8"	
W37	3'-0"	6'-8"	
W38	3'-0"	6'-8"	
W39	3'-0"	6'-8"	
W40	3'-0"	6'-8"	
W41	3'-0"	6'-8"	
W42	3'-0"	6'-8"	
W43	3'-0"	6'-8"	
W44	3'-0"	6'-8"	
W45	3'-0"	6'-8"	
W46	3'-0"	6'-8"	
W47	3'-0"	6'-8"	
W48	3'-0"	6'-8"	
W49	3'-0"	6'-8"	
W50	3'-0"	6'-8"	
W51	3'-0"	6'-8"	
W52	3'-0"	6'-8"	
W53	3'-0"	6'-8"	
W54	3'-0"	6'-8"	
W55	3'-0"	6'-8"	
W56	3'-0"	6'-8"	
W57	3'-0"	6'-8"	
W58	3'-0"	6'-8"	
W59	3'-0"	6'-8"	
W60	3'-0"	6'-8"	
W61	3'-0"	6'-8"	
W62	3'-0"	6'-8"	
W63	3'-0"	6'-8"	
W64	3'-0"	6'-8"	
W65	3'-0"	6'-8"	
W66	3'-0"	6'-8"	
W67	3'-0"	6'-8"	
W68	3'-0"	6'-8"	
W69	3'-0"	6'-8"	
W70	3'-0"	6'-8"	
W71	3'-0"	6'-8"	
W72	3'-0"	6'-8"	
W73	3'-0"	6'-8"	
W74	3'-0"	6'-8"	
W75	3'-0"	6'-8"	
W76	3'-0"	6'-8"	
W77	3'-0"	6'-8"	
W78	3'-0"	6'-8"	
W79	3'-0"	6'-8"	
W80	3'-0"	6'-8"	
W81	3'-0"	6'-8"	
W82	3'-0"	6'-8"	
W83	3'-0"	6'-8"	
W84	3'-0"	6'-8"	
W85	3'-0"	6'-8"	
W86	3'-0"	6'-8"	
W87	3'-0"	6'-8"	
W88	3'-0"	6'-8"	
W89	3'-0"	6'-8"	
W90	3'-0"	6'-8"	
W91	3'-0"	6'-8"	
W92	3'-0"	6'-8"	
W93	3'-0"	6'-8"	
W94	3'-0"	6'-8"	
W95	3'-0"	6'-8"	
W96	3'-0"	6'-8"	
W97	3'-0"	6'-8"	
W98	3'-0"	6'-8"	
W99	3'-0"	6'-8"	
W100	3'-0"	6'-8"	

- Specification:
1. ALL 0.23 TK BRICK WALLS ARE IN CM 1:5
 2. ALL 0.12 TK BRICK WALLS ARE WITH CM 1:5
 3. ALL RCC ITEMS ARE IN MIX 1:2:4
 4. RCC FOR FOUNDATION IN MIX 1:2:4
 5. RCC FOR FLOORING IN MIX 1:2:4
 6. PLASTERING TO CEILING IN CM 1:3
 7. PLASTERING TO WALLS IN CM 1:4

- Legend:
1. PROPOSED WORK SHOWN THUS
 2. SITE BOUNDARY
 3. ROAD
 4. WATER LINE
 5. DRAINAGE LINE

Scale: 1in = 8ft Date: 25-01-1988

Owner:

MMDA (B)PP No. 1
C.No. 12/22/89
ASST. - R.P. 16-13

Job No. 12/22/89
Revised Plans (as per MMDA) For
Ms Rajman Builders at
East Coast Road Thiruvanniyur
Bearing S.No.201/1 Division
No.150 Village No.140

ARCHITECT:
S. Subramaniam, M. ARCH. A.I.I.A.
ARCHITECT & INTERIOR DESIGNER
LICENSED CLASS I SURVEYOR No. 98
91 KAMARAJ AVENUE,
ADYAR,
MADRAS 600028. P.H. 4078. (1510)

BLOCK-3